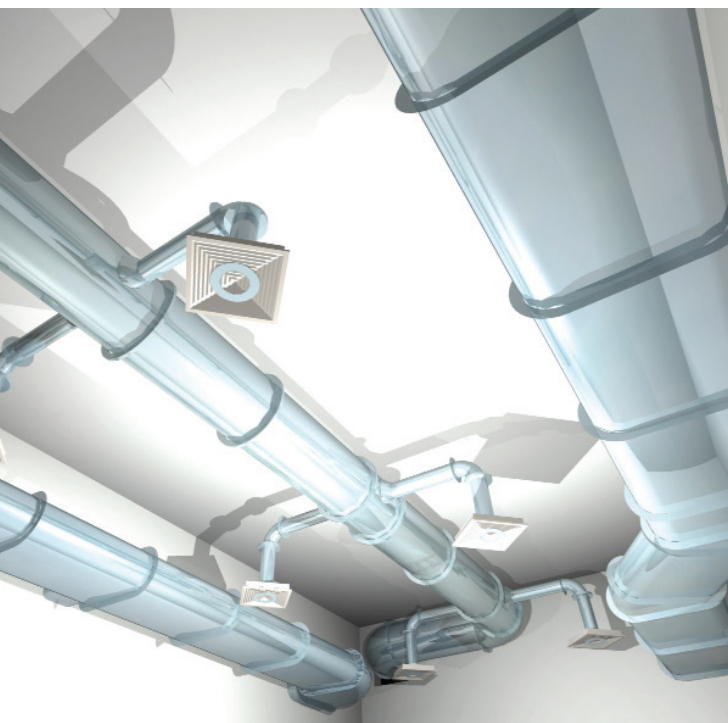


DUCTWORK

DUCTWORK DESIGN DELIVERED

Ductwork provides the tools for ArchiCAD users to model ductwork quickly and efficiently, without an in-depth knowledge of HVAC. It makes placing ducts in ArchiCAD as easy as drawing a wall.

Architects and designers who receive simple 2D data from their HVAC consultants can use this Add-On to quickly create a model. It is the ideal tool for handling large-scale projects in commercial or industrial building designs. Ductwork users can effectively coordinate ducting systems and visualize the 3D model by utilizing ArchiCAD's award-winning 3D tools. Interior designers can use Ductwork to model ventilation systems for their projects, customizing a system's appearance to create cutting-edge designs for their clients.



Ductwork is fully integrated into ArchiCAD, so you can access its features without leaving the familiar ArchiCAD workspace. Objects behave as ordinary parametric 3D ArchiCAD library parts, and can be edited and modified at will. GDL elements can be accessed and edited without using the Add-On, so you can share them with the wider design, construction or maintenance team.

CREATE DUCTWORK SYSTEMS: EXTEND THE VIRTUALBUILDING™ ENVIRONMENT!

You can use Ductwork to create the outline and the hatching of a duct in 2D, and a solid duct body in 3D. The Add-On will recognize any change in direction or level, and automatically size and place the bend of the respective duct section. Tees and shoes can be self-acting, sized and placed, and all connections are made automatically. Grilles can be connected with user-defined methods.

SOFTWARE REQUIREMENTS

Ductwork is not a stand-alone application, it can only be run from within the corresponding version of ArchiCAD.

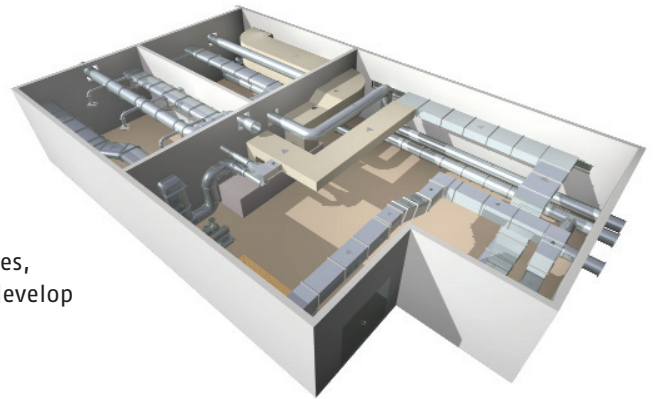
- ArchiCAD 8 is required for Ductwork 1.1. (Mac OS or Windows)
- ArchiCAD 8.1 is required for Ductwork 1.2. (Mac OS or Windows)

SYSTEM REQUIREMENTS

- The system and hardware requirements correspond to those of the ArchiCAD version.

AUTOMATIC DUCTWORK CONNECTIONS: POWERFUL PRODUCTIVITY TOOLS

When duct elements need to be connected to form part of a larger 'system', Ductwork can automatically connect the duct elements; simply select them and use the Auto-connect command. The auto-connect feature works with both simple duct systems and more complex arrangements, which may involve grilles, tees, flexible ductwork, etc. Using this feature makes it easy to rapidly develop extensive duct networks.



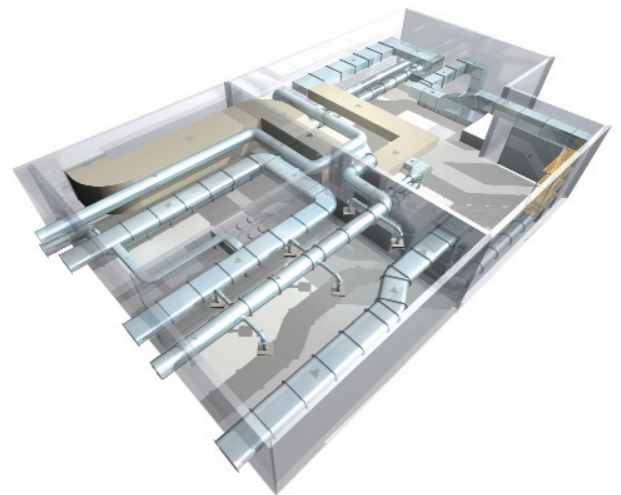
AUTOMATIC WALL/FLOOR PENETRATIONS: LEVERAGE THE MUSCLE OF THE ARCHICAD MODEL!

Penetrations can be automatically created for all ductwork systems, where ductwork passes through internal and external walls and slabs. Users can define the clearances required on each side of the ducts, and set minimum distances between penetrations to determine when adjacent penetrations should be combined. In addition, as the building model is developed, these penetrations can automatically be updated to take into account the changes in the project.

IFC AND ARCHIFM COMPATIBILITY

Duct elements correspond to IFC classification types, so they contain the necessary attributes and parameters. Therefore, ArchiCAD IFC output will export the correct and relevant data.

Facility Management information is also available in each object, allowing the model to be imported into an ArchiFM database.



To find your nearest ArchiCAD® reseller or distributor, contact any Graphisoft office or visit www.graphisoft.com/distributors

Hungary (Headquarters)
Phone: +36 (1) 4 37 30 00
Fax: +36 (1) 4 37 30 99
e-mail: info@graphisoft.hu

Germany
Phone: +49 (89) 7 46 43 0
Fax: +49 (89) 7 46 43 2 99
e-mail: mail@graphisoft.de

United States
Phone: +1 (617) 485 4203
Fax: +1 (617) 485 4201
e-mail: info@graphisoft.com

United Kingdom
Phone: +44 (1 79) 3 49 22 77
Fax: +44 (1 79) 3 49 22 88
e-mail: mail@graphisoft.co.uk

Spain
Phone: +34 (91) 5 35 87 50
Fax: +34 (91) 5 35 87 51
e-mail: mail@archicad.es

Japan
Phone: +81 (3) 55 45 38 00
Fax: +81 (3) 55 45 38 04
e-mail: mail@graphisoft.co.jp