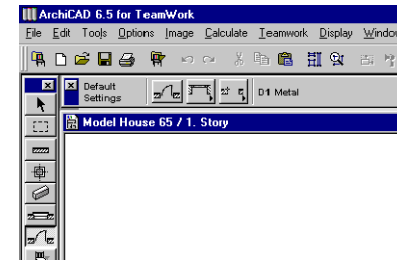
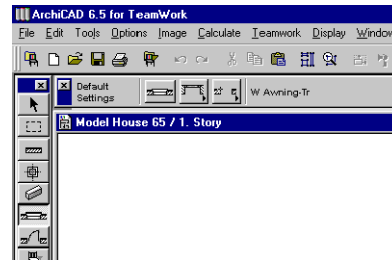
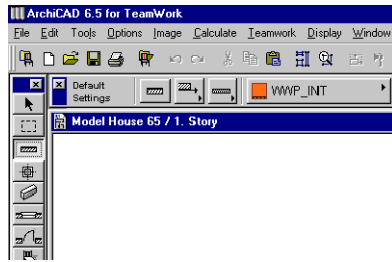


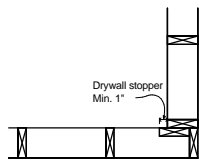
1 - Using ArchiCAD wall tool you draw the required building, and insert the openings using the window and door tools. For different walls types, there will be different pre-sets for the walls sections that would differentiate between the load bearing and non load bearing walls and the exterior and interior walls.



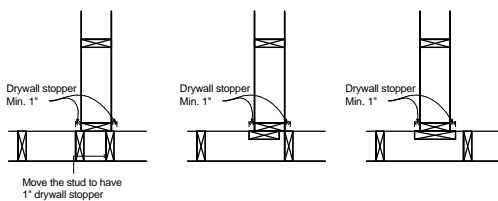
2 - Use the new command "Convert" under the tools menu (an add-on to ArchiCAD) to insert wall panel objects taking into consideration the following criteria:

- The exact wall dimensions (wall length, height and as wide as the composite wall component presenting the studs, and inserted in the same location of this composite wall component.
- In the wall panel objects, openings are inserted in their exact locations taking care of their conditions as load bearing or non load bearing walls.
- Whenever there in an intersecting wall, an extra stud or vertical or horizontal backer is add according to certain rules.

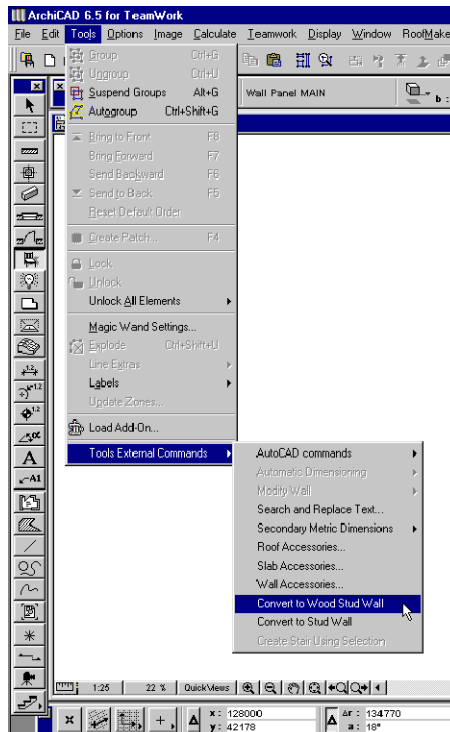
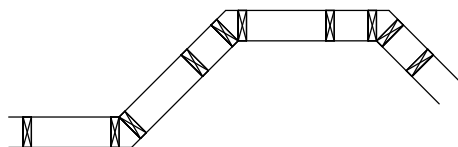
Corner Walls



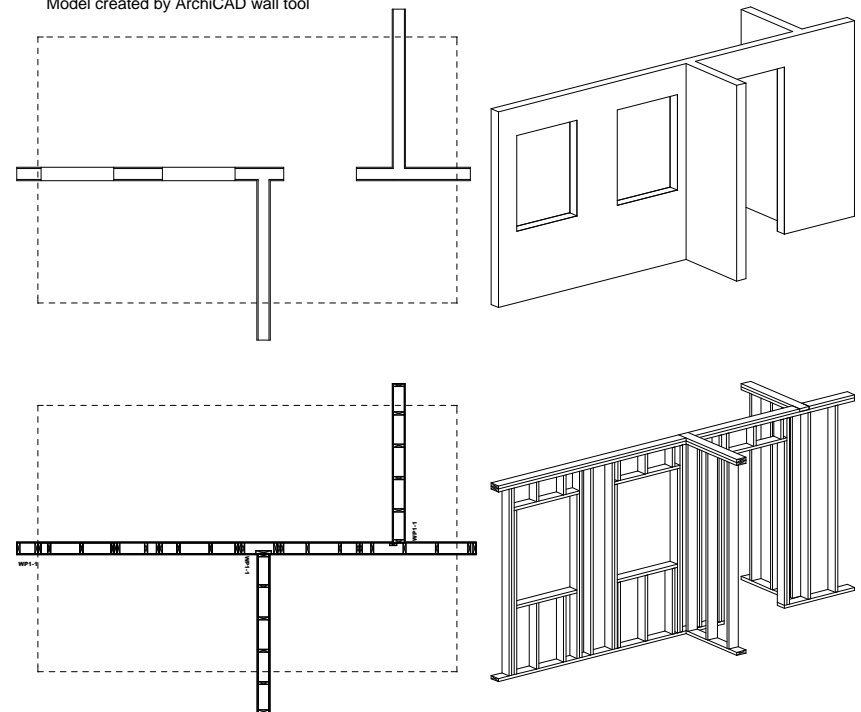
Intersecting Walls



Walls with different intersecting angles

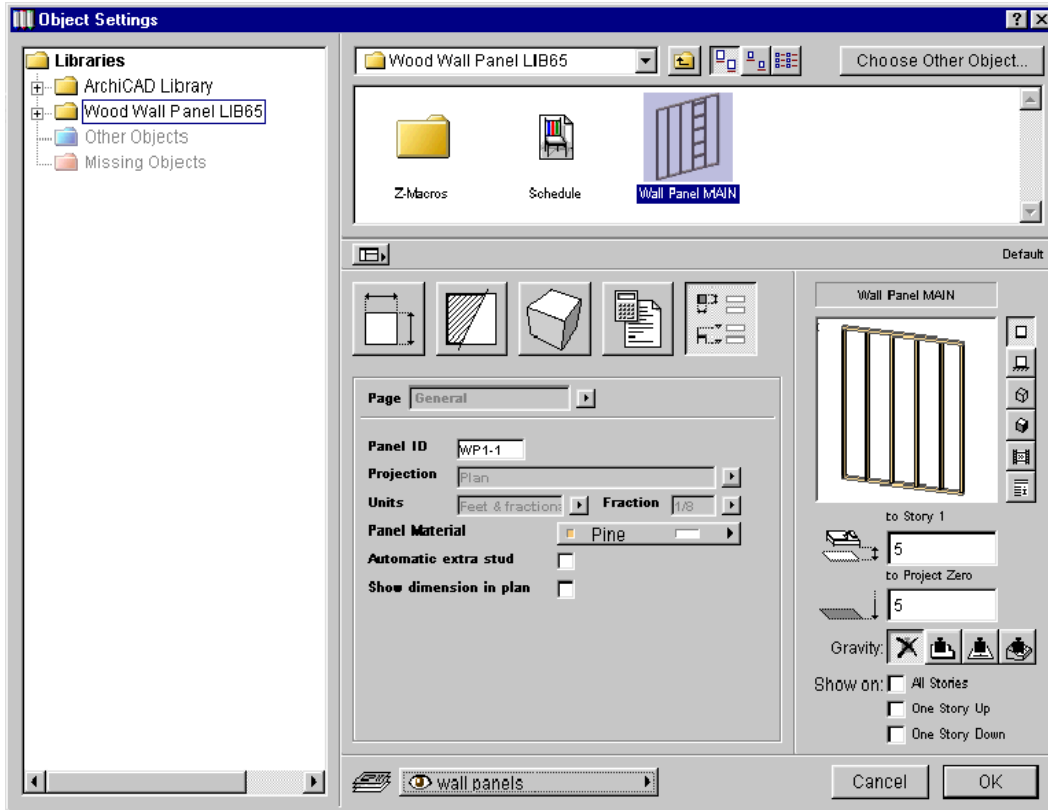


Model created by ArchiCAD wall tool

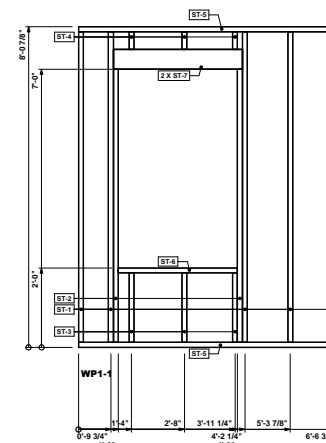


3 - Inserted objects can be manually edited for further modifications or fine tunings.

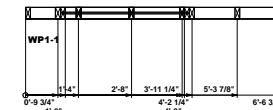
Wood wall panel object settings:



Units Feet & Fractional Inches



Wall panel elevation

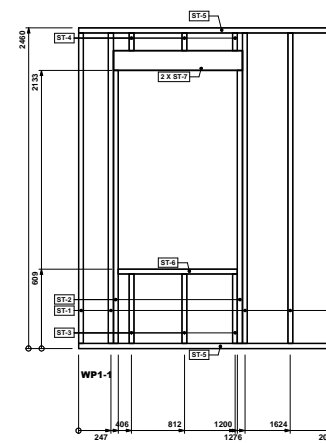


Wall panel plan

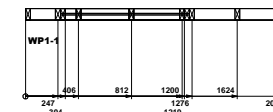
STUDS				
No.	DESCRIPTION	L (mm)	QTY.	NOTES
ST-1	2 X 4	7-9 7/8"	5	
ST-2	2 X 4	6-10 1/2"	2	
ST-3	2 X 4	1'-0"	3	
ST-4	2 X 4	0-5 3/8"	3	
ST-5	2 X 4	6-6 3/4"	2	
ST-6	2 X 4	3'-0"	1	
ST-7	2 X 6	3'-0"	2	

Wall panel schedule

Units Millimeters



Wall panel elevation

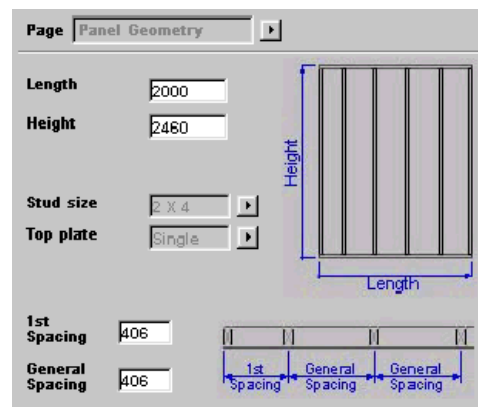
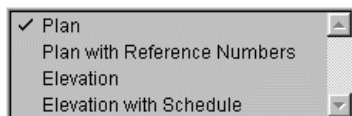


Wall panel plan

STUDS				
No.	DESCRIPTION	L (mm)	QTY.	NOTES
ST-1	2 X 4	2383	5	
ST-2	2 X 4	2056	2	
ST-3	2 X 4	533	3	
ST-4	2 X 4	150	3	
ST-5	2 X 4	2000	2	
ST-6	2 X 4	914	1	
ST-7	2 X 6	990	2	

Wall panel schedule

Projection types:

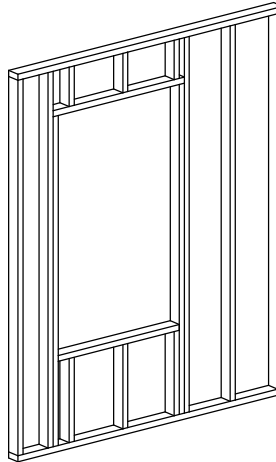


Page Openings

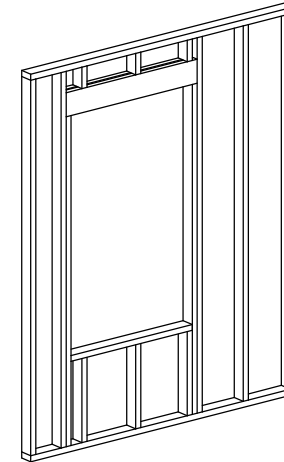
1 - Opening Width
2 - Starting Distance
3 - Opening Height
4 - Opening Sill

No.	Width	Starting Distance	Height	Sill	Lintel Type
(1)	0	0	0	0	No Lintel
(2)	0	0	0	0	No Lintel
(3)	0	0	0	0	No Lintel
(4)	0	0	0	0	No Lintel

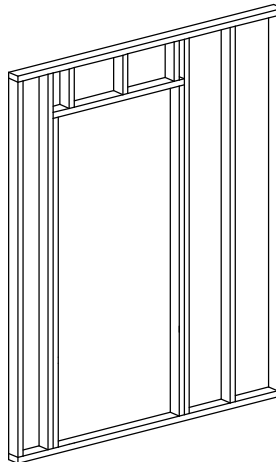
Openings *



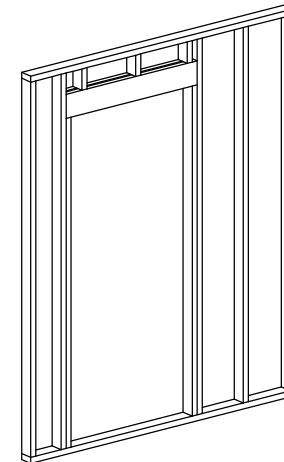
Sill height > 0 (window)
Lintel option (no lintel)



Sill height > 0 (window)
Lintel option
(2 2X4)
(2 2X6)
(2 2X8)
(2 2X10)
(2 2X12)

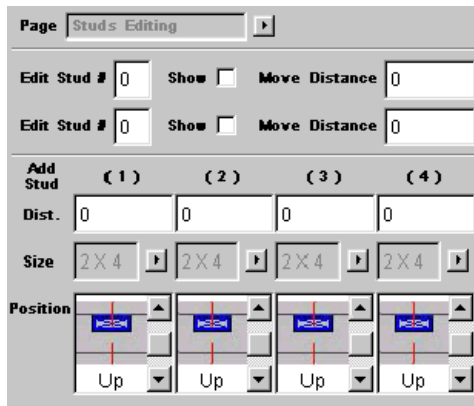


Sill height = 0 (door)
Lintel option (no lintel)

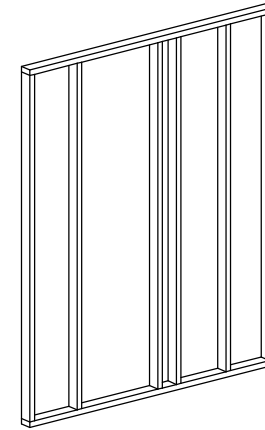
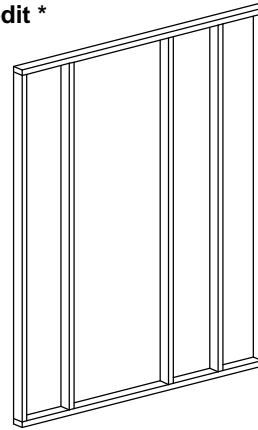


Sill height = 0 (door)
Lintel option
(2 2X4)
(2 2X6)
(2 2X8)
(2 2X10)
(2 2X12)

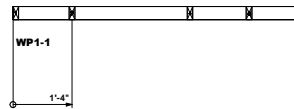
* Within the same wall panel 4 openings can be inserted, in each you assign the following:
Opening width - 0 means no opening
Opening starting distance
Opening height
Sill height - 0 means door opening
Lintel type (No lintel - 2 2X4 - 2 2X6 - 2 2X8 - 2 2X10 - 2 2X12)



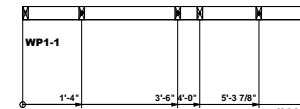
Stud edit *



* Within the same wall panel you can edit 2 automatically inserted studs

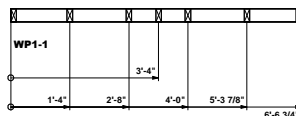
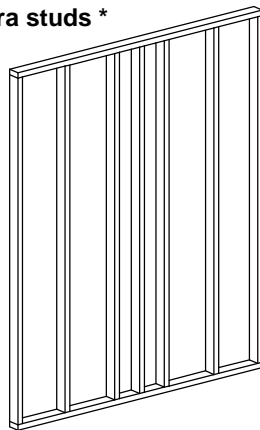


Hide stud
Stud # 3 is removed

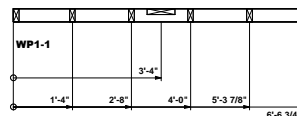
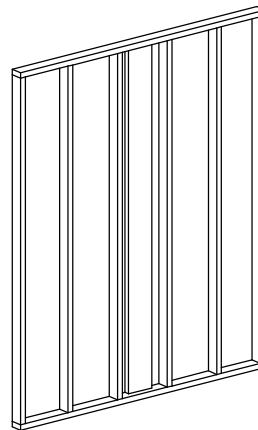


Move stud
Stud # 3 is moved 10"
The movement can be in positive or negative directions

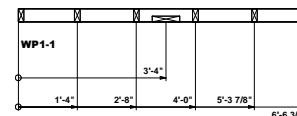
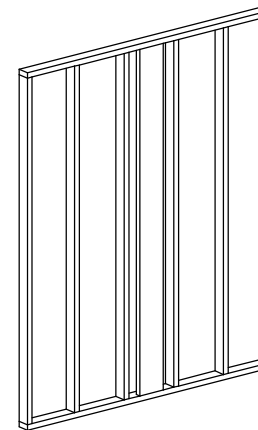
Extra studs *



Extra stud added
Position regular



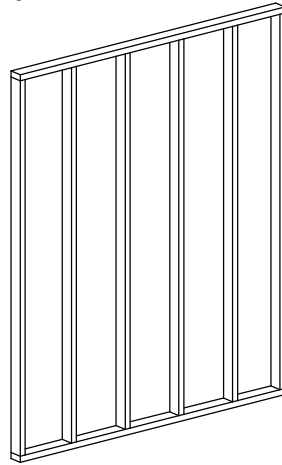
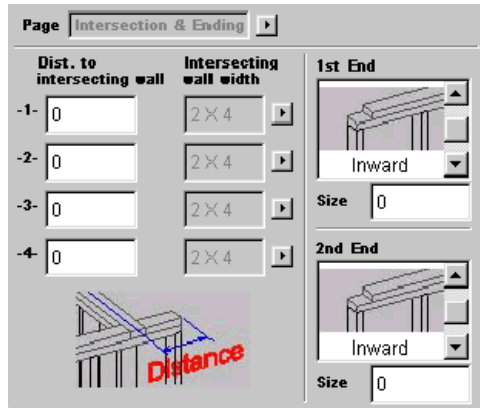
Extra stud added
Position rotated up



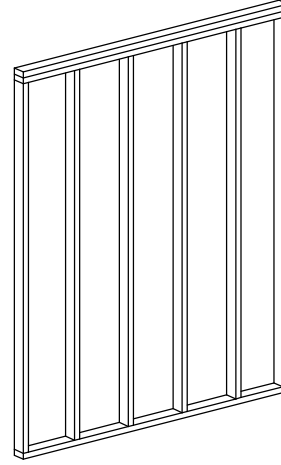
Extra stud added
Position rotated down

* Extra stud size options
2X4 - 2X6 - 2X8 - 2X10 - 2X12
In the same wall panel you can add up to 4 extra studs

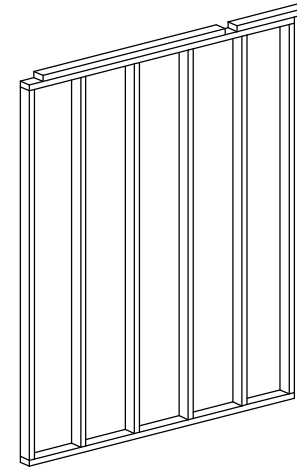
Top plate



Single top plate

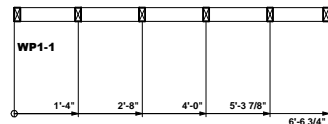
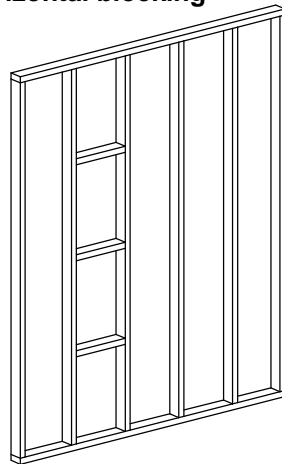
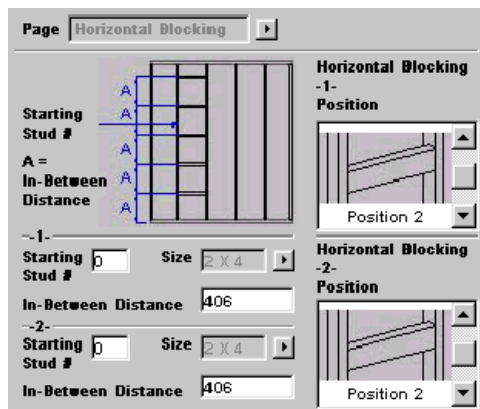


Double top plate
no intersecting walls
straight endings

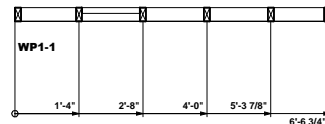
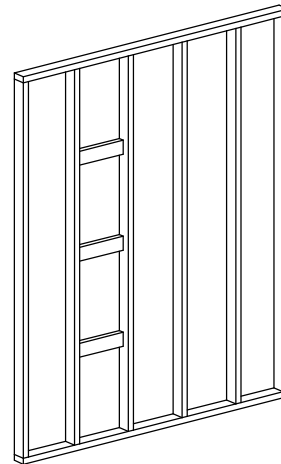


Double top plate
one intersecting wall
joint endings

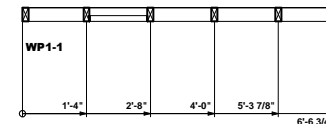
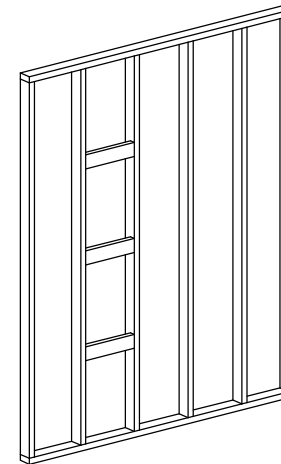
Horizontal blocking *



Horizontal blocking from stud # 2
Position # 1



Horizontal blocking from stud # 2
Position # 2



Horizontal blocking from stud # 2
Position # 3

* Horizontal blocking size options are 2X4 or 2X6
Vertical spacing between blockings can be adjusted.
Horizontal blockings are automatically inserted from the assigned stud to the next one.
In the same wall panel you can add up to 2 horizontal blockings